



STEEL BULKHEADS & ADAPTERS

CONSTRUCTION

- AISI 1045 Steel, Carbon Steel:12L14
- Plating: ASTM B 633 Type V
(High Corrosion Clear Trivalent)

APPLICATIONS



- Panel Mounts
- Transportation: Air brake systems, trucks, trails, RVs.

RANGES

- Temperature Range: 0°F to 350° F.
- Pressure Range: Up to 2500PSI



Pipe Thread Assembly:

Straight Fittings:

1. Hand Tighten
2. 1/8" to 1/2": Wrench Tight 2 Full 360° Turns
1/2" & Above: 1 1/2" Full Turns

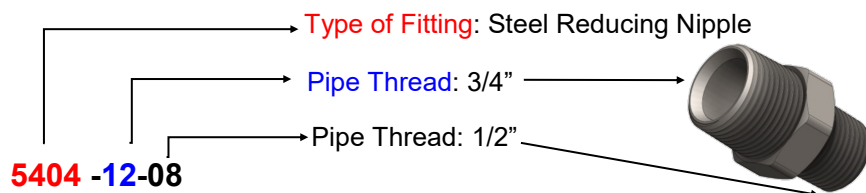


Shaped Fittings:

1. Hand Tighten
2. Wrench Tight 1" to 1 1/2" Full 360° Turns

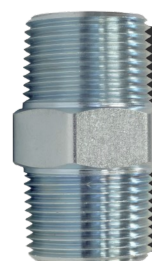
ORDERING INFORMATION

- Nomenclature Example:



NOTES

- Non-stock items and special parts are available on a quotation basis.
- Configurations and dimensions are subject to change without notice.



Quality Matters!

Our pipe threads are made with the proper wall thickness and are made to dry-seal specifications.



WARNING: Products offered by Robo-Fit can expose you to chemicals such as lead, a chemical which is known to the State of California to cause cancer, birth defects, or other reproductive harm. For more information go to www.P65Warnings.ca.gov

RF21204

1/4" FPT (Short) Bulkhead Coupling



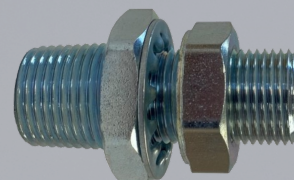
RF5465

1/4" FPT Bulkhead Coupling



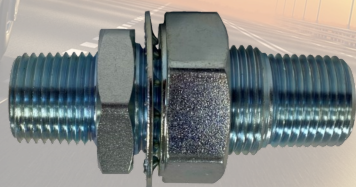
RF5498

Steel Bulkhead Adapter Coupling



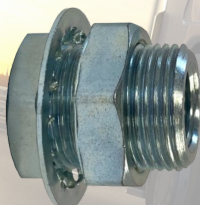
RF5730

Steel Bulkhead Adapter Coupling



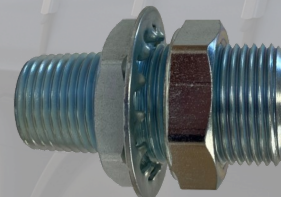
RF17709

3/8" FPT Bulkhead Coupling



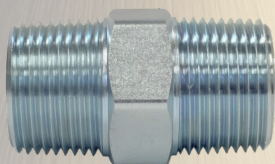
RF11304

Steel Bulkhead Adapter Coupling



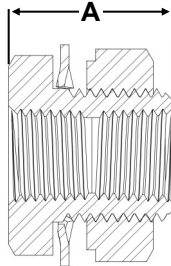
5404

Steel Hex Nipple



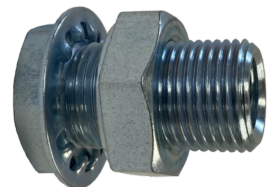
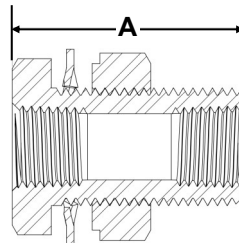
RF21204 1/4" FPT Steel Bulkhead Coupling (Short)

PART NUMBER	FPT	FPT	STRAIGHT THREAD	A	BODY HEX	NUT HEX
RF21204	1/4"	1/4"	3/4"-16 UNF	.94"	1"	1.063"



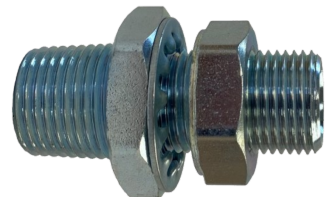
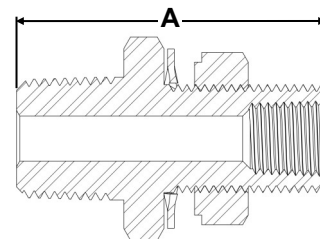
RF5465 1/4" FPT Steel Bulkhead Coupling

PART NUMBER	FPT	FPT	STRAIGHT THREAD	A	BODY HEX	NUT HEX
RF5465	1/4"	1/4"	3/4"-16 UNF	1.25"	1"	1.063"



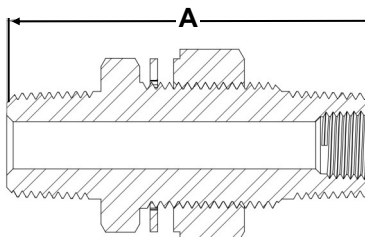
RF5498 Steel Bulkhead Adapter Coupling

PART NUMBER	MPT	FPT	STRAIGHT THREAD	A	BODY HEX	NUT HEX
RF5498	1/2"	1/4"	3/4"-16 UNF	2.16"	1.25"	1.063"



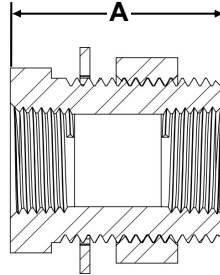
RF5730 Steel Bulkhead Adapter Coupling

PART NUMBER	MPT	FPT	STRAIGHT THREAD	A	BODY HEX	NUT HEX
RF5730	1/2"	1/4"	1"-14 UNS	2.94"	1.25"	1.375"



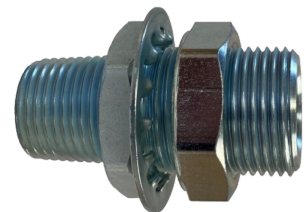
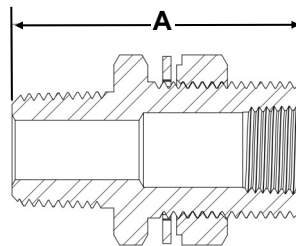
RF17709 3/8" Steel Bulkhead Coupling

PART NUMBER	FPT	FPT	STRAIGHT THREAD	A	BODY HEX	NUT HEX
RF17709	3/8"	3/8"	1"-14 UNS	1.31"	1.125"	1.25"



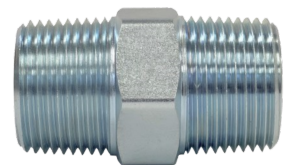
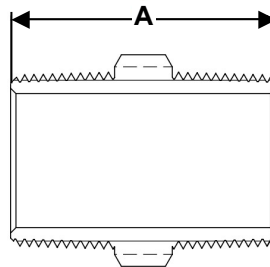
RF11304 Steel Bulkhead Adapter Coupling

PART NUMBER	MPT	FPT	STRAIGHT THREAD	A	BODY HEX	NUT HEX
RF11304	1/2"	3/8"	1"-14 UNS	2.15"	1.25"	1.25"



5404 Steel Hex Nipple

PART NUMBER	MPT	MPT	A	BODY HEX
5404-12-08	3/4"	1/2"	1.925"	1.125"
5404-12-12	3/4"	3/4"	1.96"	1.125"



Pre-Applied Thread Sealant Available

Want thread sealant applied to your pipe ends?

We apply our sealant in house with our custom made sealant applicator, capable of completing up to 1,000pcs per hour.

